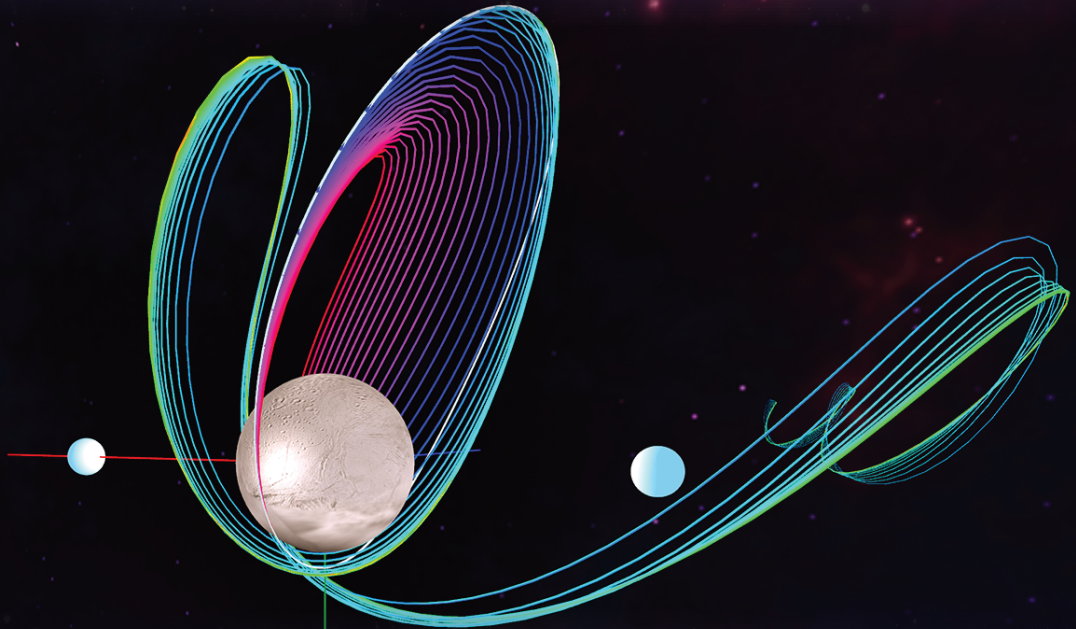




INTERPLANETARY MULTIBODY MISSION DESIGN



DSTE

Deep Space Trajectory Explorer



The Deep Space Trajectory Explorer is an interactive software package that combines advanced multibody trajectory design techniques with innovative visualizations to dramatically reduce time spent on trajectory design. By weaving visualizations into the design process, the Deep Space Trajectory Explorer allows intuitive selection of orbits that satisfy mission constraints. Augment your design process by exporting solutions to your high-fidelity mission design and optimization tools.

KEY FEATURES & BENEFITS

- ▶ Fully configurable integration of planar and 3D trajectories
- ▶ Multidimensional trajectory Poincaré maps
- ▶ Near Earth Object intercept
- ▶ Asteroid rendezvous and station keeping
- ▶ Generate libration point orbit families
- ▶ Manifold orbit design
- ▶ Visual transfer design
- ▶ Visually filter millions of points
- ▶ Rapidly isolate solutions that meet your mission needs

FAST ORBIT GENERATION

The Deep Space Trajectory Explorer is built for modern systems, dynamically parallelizing across available cores to provide quick trajectory integration and Poincaré map generation.

The Deep Space Trajectory Explorer renders millions of linked data points on screen using cross-platform, hardware-accelerated technology. Multiple 2D and 3D views combine to respond to the user's actions. Click, drag, touch and swipe directly with orbits and maps to visually identify the ideal solution for your mission requirements.

VISUALLY INTUITIVE TRAJECTORY DESIGN

The complicated task of designing spacecraft trajectories and transfers in the presence of multiple gravitational bodies is simplified by the Deep Space Trajectory Explorer.

The Deep Space Trajectory Explorer is designed with one supreme principle: Let the data be the interface. The user's experience is enhanced through visual tools that interweave their experience and intuition directly into the design space.

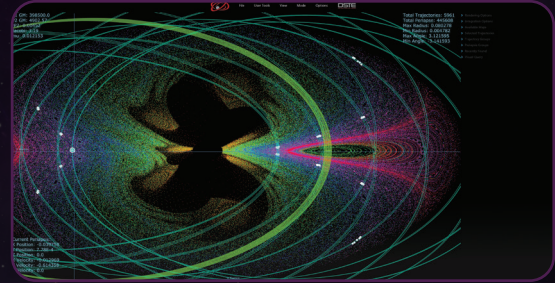
Data visualization and filtering allow quick, intuitive identification of orbits that are not immediately apparent using other techniques.

The incorporation of multibody dynamics allows discovery of trajectories that take advantage of the complex gravitational environment to achieve lower maneuver costs.

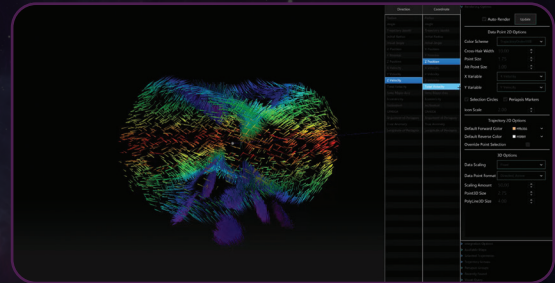
Exploration of the design space yields families of trajectory solutions that satisfy mission constraints, allowing fast analysis of alternatives and quick reaction to changing requirements.



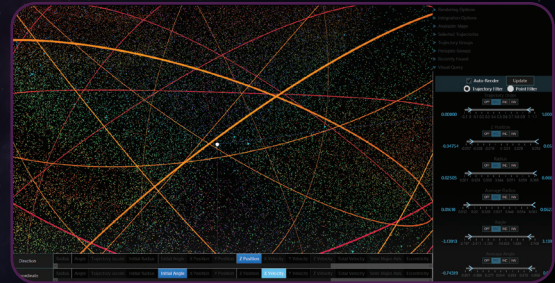
Design Libration Point Orbit Families and Transfers



Interact with Millions of Data Points in Poincaré Maps



User Configurable Multi-Dimensional Data Analysis



Instantly Filter and Search Through Large 3D Data Sets



8910 Astronaut Blvd.
Suite 212
Cape Canaveral, FL 32920
(321) 200-1526