



HIGH FIDELITY MISSION DISPLAYS, CUSTOMIZED TO MEET YOUR SPECIFIC NEEDS



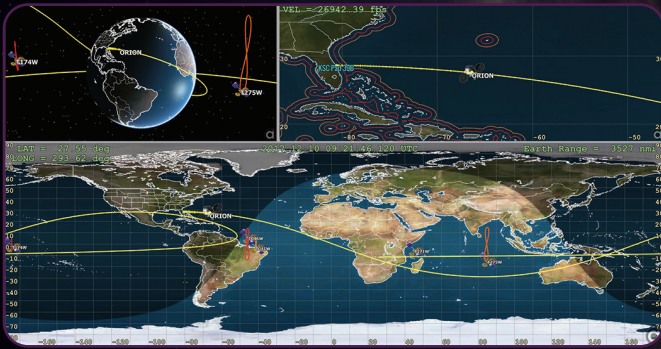
Atlas Displays, real-time situational awareness spacecraft displays powered by FreeFlyer®.

Atlas Displays are customized FreeFlyer simulations that run live 24/7 in Mission Operations Centers of any size and complexity. Atlas Displays provide operators with high-level situational awareness at a glance. Atlas Displays can present alert conditions, countdown to maneuvers, depict sensor coverage and contacts — they have the flexibility to meet any space mission visualization need. Real-time tracking of telemetry data, plots, and 2D/3D visualizations can be presented across any number of screens in any layout, running continuously for months on end and editable on the fly. Atlas Displays can also be run offline to play back live or simulated data for training, analysis, or promotional purposes.

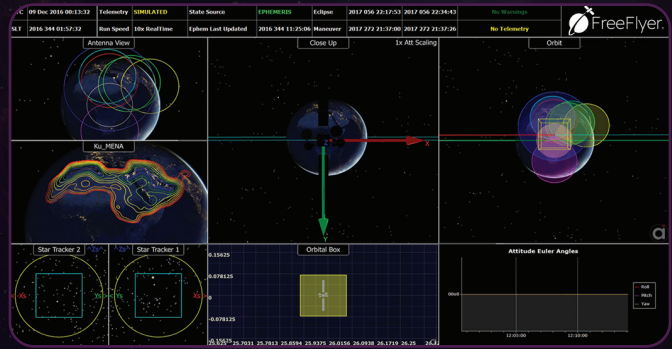
KEY FEATURES & BENEFITS

- ▶ Supports any size mission — single LEO/GEO spacecraft to commercial constellations
- ▶ Suitable for current and future missions. Connects to any ground segment through multiple interface methods.
- ▶ Display flight dynamics information in addition to other situational awareness data piped in from external sources
- ▶ Atlas Displays have integrated with ground systems using other COTS or in-house flight dynamics systems

UNLIMITED CUSTOMIZATION – WE PROVIDE A DISPLAY CAPABILITY TO MEET YOUR EXACT SPECIFICATIONS



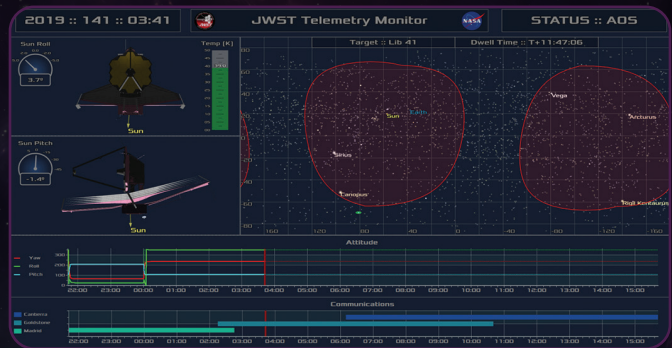
Orion - Artemis 1



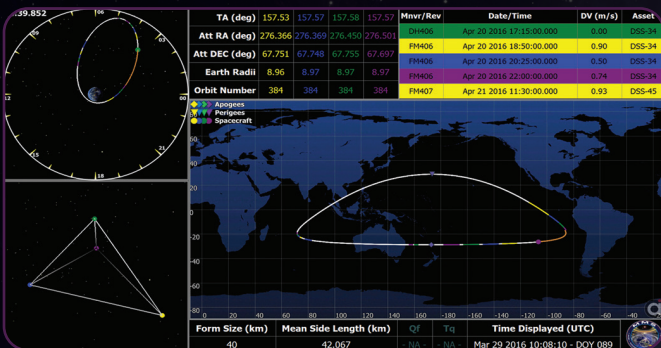
GEO Communication Satellite Display



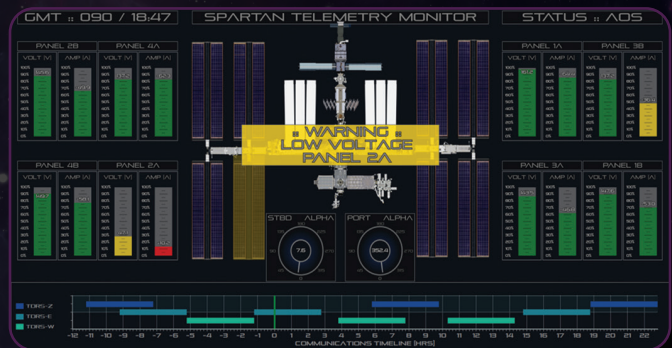
Mega-Constellation Status at a Glance



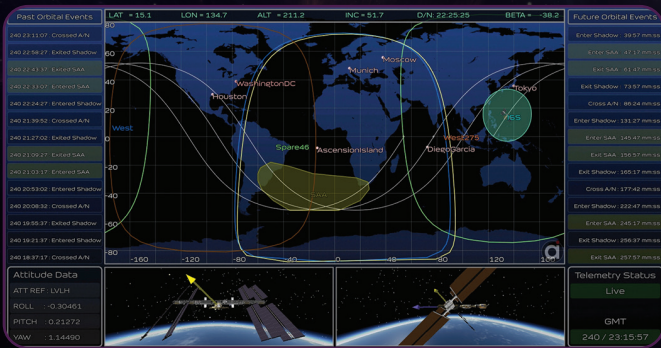
JWST Real-Time Display



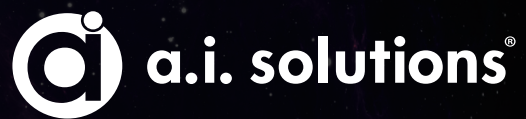
Magnetospheric Multiscale (MMS) Spacecraft Formation Flying



ISS Spartan Telemetry Monitor



ISS Orbital Events



4500 Forbes Boulevard, Suite 300
Lanham, MD 20706
(301) 306-1756

© 2025 a.i. solutions, Inc. All Rights Reserved.